

# ZACA A TE MOANA

Veritable schooner  
yacht of unmatched  
distinction

Designers : Olivier F. van Meer,  
Enkhuizen,  
The Netherlands  
Shipbuilders : Shipyard 'De Amstel' BV,  
Ouderkerk a/d Amstel,  
The Netherlands  
Rigging : Van Meer Rigging Group,  
Enkhuizen,  
The Netherlands

Recently Naval Architects & Yacht Designers Bureau Olivier F. van Meer from Enkhuizen, The Netherlands was commissioned by E. Kastelein to design a 38m schooner yacht with classic lines. What was remarkable about this commission was the freedom in design with the only criteria that the new sailing yacht should be beautiful and very fast.

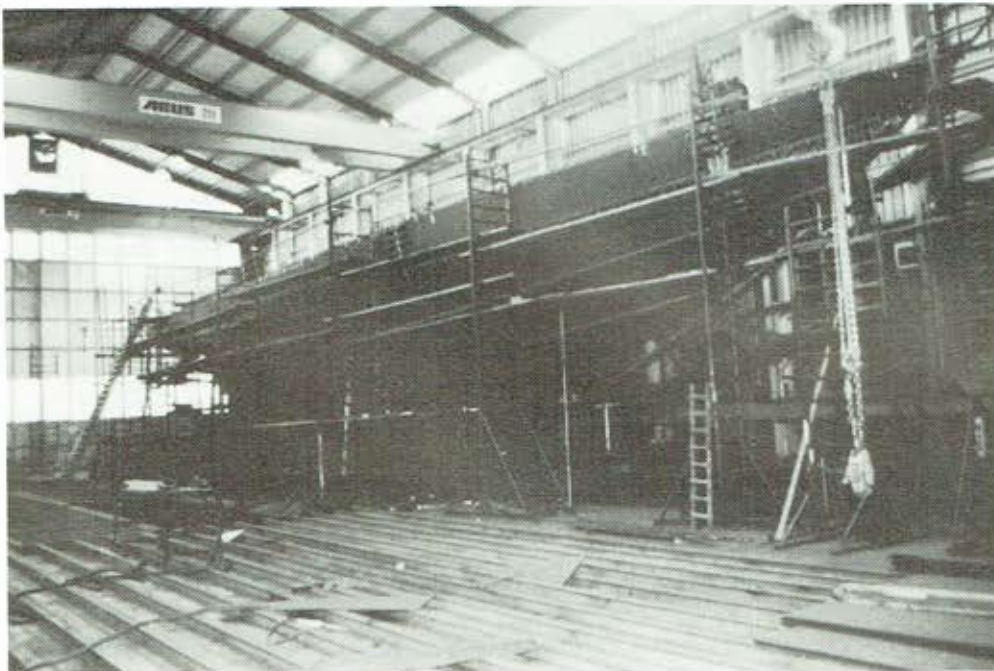
## Construction

The hull has been constructed by Shipyard 'De Amstel' of Ouderkerk a/d Amstel. After the launching of the hull at Ouderkerk a/d Amstel it



left for Zaandam where it was fitted out at the Kramer Shipyard. The wood bulwark, the heavy gunwale and the teak hatches and doorways were made and fitted by Scheepstimmer-

bedrijf HvC of Enkhuizen. The hull of the Zaca a te Moana (literally translated: Peace of the Sea) is of all-welded steel and fitted with a teak wood deck on a steel frame.



The schooner yacht has the following main dimensions:

L.o.a. (incl. bowsprit) . . . . .	43.80m
Length (along deck) . . . . .	36.80m
Length (along waterline) . . . . .	27.10m
Beam . . . . .	7.20m
Depth . . . . .	4.30m

## Rigging

All masts and sheathings have been given a particularly fine finish and were made and installed by T. Vreeken and Bart Vermeer of Rotterdam. The main sail has an area of 260 square meters. The total area of all sails is 800 square meters and were supplied by Zeilmakerij De Vries of Lemmer. The sails are of a very high standard with regard to model, solidity and finish. A hydroset has been installed for the windlass as well as three capstans for the halyards, and sheets at each mast. All spars have been glued.

The complete rigging has been supplied and certified by the Van der Meer Rigging Group of



Enkhuizen who also carried out the trimming and the sea trials.

**Accommodation**

Accommodation has been provided to high standards. The fore part of the ship accommodates separate living quarters for the captain and four crew members, each with their own sanitary facilities. The style and finish of these areas are of the same high standard as those of the guests, which comprise a wholly beechwood wainscoting with stylish panelled cupboards and horizontal slabs of dark natural stone.

Passenger accommodation has been provided in three spacious two-berth cabins furnished with separate bathroom, shower and toilet. The owners' cabin has been situated amidships forward of the passenger accommodation. The very spacious and luxury saloon has been fitted with warm plate-glass and a modest amount of brass, with self designed ceiling lamps being fitted. In between the guests' cabins and the saloon a cold storage room is located on the port side and with the galley on the starboard side.

The *Zaca a te Moana* is equipped with a six cylinder 220kW **Rolls Royce** marine diesel engine for auxiliary propulsion. Electrical power is generated by a four cylinder 35kW **Perkins** marine diesel engine.

The schooner yacht has the following tank capacities in cu.m.:



Gas oil . . . . .	8.00
Water . . . . .	14.00
Sewage water . . . . .	4.50
Ballast/trim . . . . .	8.00
Leadballast (internal) . . . . .	40 tonnes

The *Zaca a te Moana* has been designed and built to the rules and regulations of Lloyd's Register, however not under its inspection.

**Equipment o.b. the *Zaca a te Moana***  
(partial list)



- Amstel Shipyard the.
- Ouderkerk a/d Amstel . . . . . : casco
- Anker 't, Schelluinen . . . . . : windows
- Antwerpse Motoren
- Werke, Antwerp . . . . . : gearbox
- Bart Vermeer,
- Rotterdam . . . . . : masts
- Bezemer, Abbenbroek . . . . . : cooling installation
- Boon, Bovenkarspel . . . . . : paints
- Electro Nautic,
- Amsterdam . . . . . : navigational equipment
- HvC Scheepstimmerwerk,
- Enkhuizen . . . . . : exterior carpentry
- HVO, Vlaardingen . . . . . : anchors
- Kramer, Zaandam . . . . . : Rolls Royce engine and engine room installation
- Kroon, Hoogezand . . . . . : doorfittings
- Meer Rigging group,
- Enkhuizen . . . . . : rigging
- Pols, Gouderak . . . . . : Generator
- Shiptron,
- Enkhuizen . . . . . : electrical installation
- Spek, Zevenaar . . . . . : pumps
- Vries de, Lemmer . . . . . : sails
- Wagenaar,
- Bovenkarspel . . . . . : interior carpentry



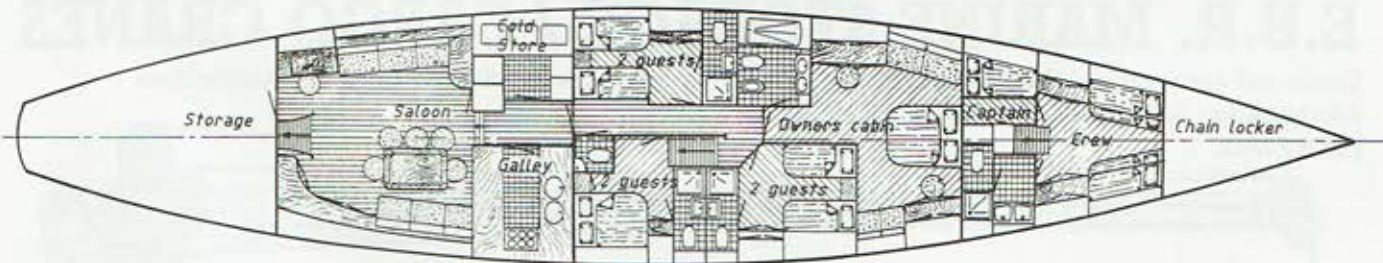
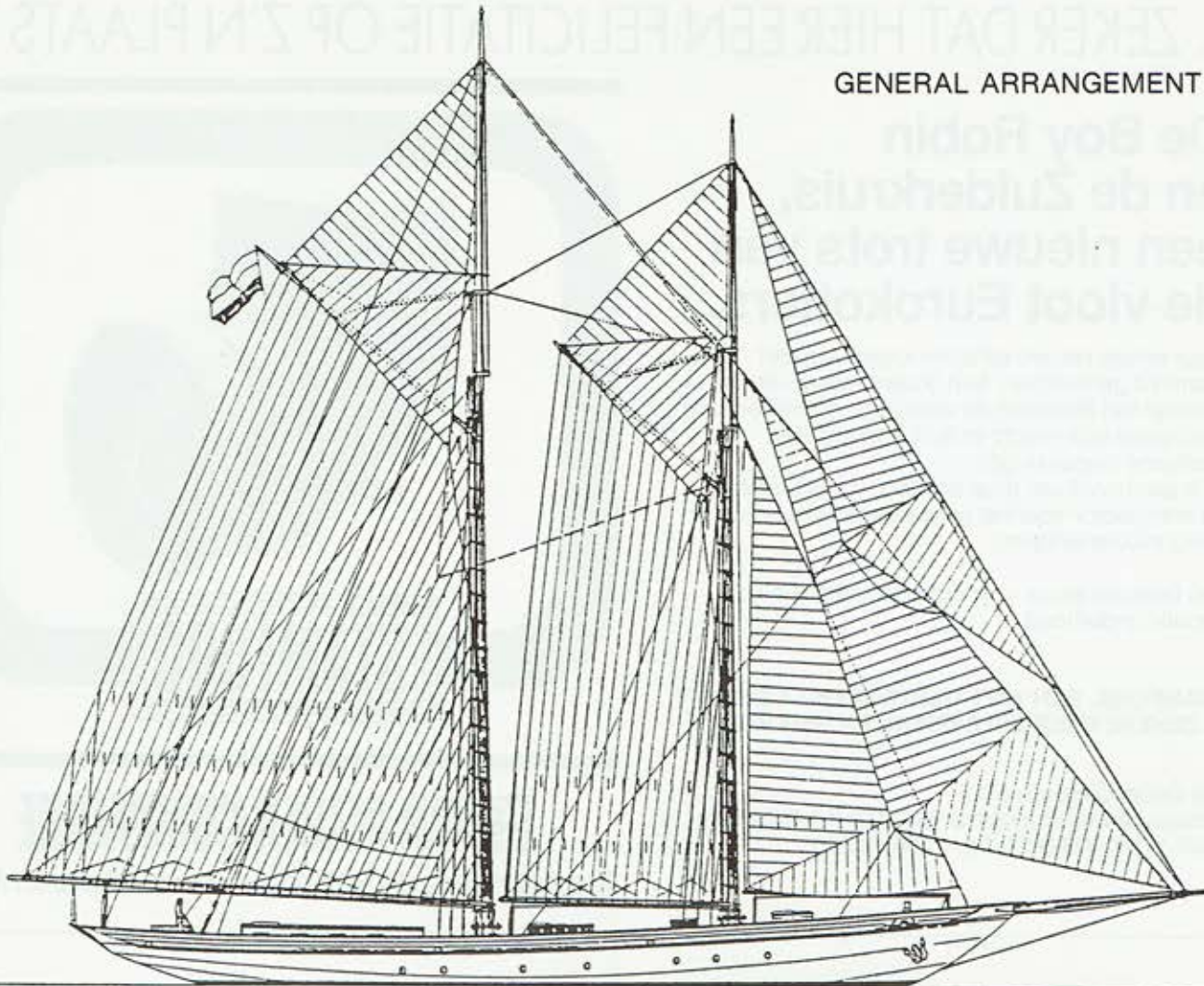
**SCHEEPSWERF "DE AMSTEL" B.V.**

WENST DE "ZACA TE MOANA" EEN BEHOUDEN VAART

Amsteleiland 3 - Ouderkerk a/d Amstel - 1184 VZ Amstelveen - Telefoon 02963-1230 - Telefax 02963-5200



GENERAL ARRANGEMENT



**GERARD  
WAGENAAR**

Het interieur en intimmeren van de  
ZACA A TE MOANA werd door ons verzorgd

Hoofdstraat 279 -1611 AH Bovenkarspel -Telefoon: 02285-13574

**KRAMIER  
SCHEEPSMOTOREN B.V.**

MACHINEFABRIEK - HANDEL - REPARATIE - INSTALLATIE  
Kalf 33, 1509 AB Zaandam Tel.: 075-164082 - Fax 075-703729

wij levererden en installeerden de complete  
voortstuwings installatie aan boord van de  
**ZACA A TE MOANA**